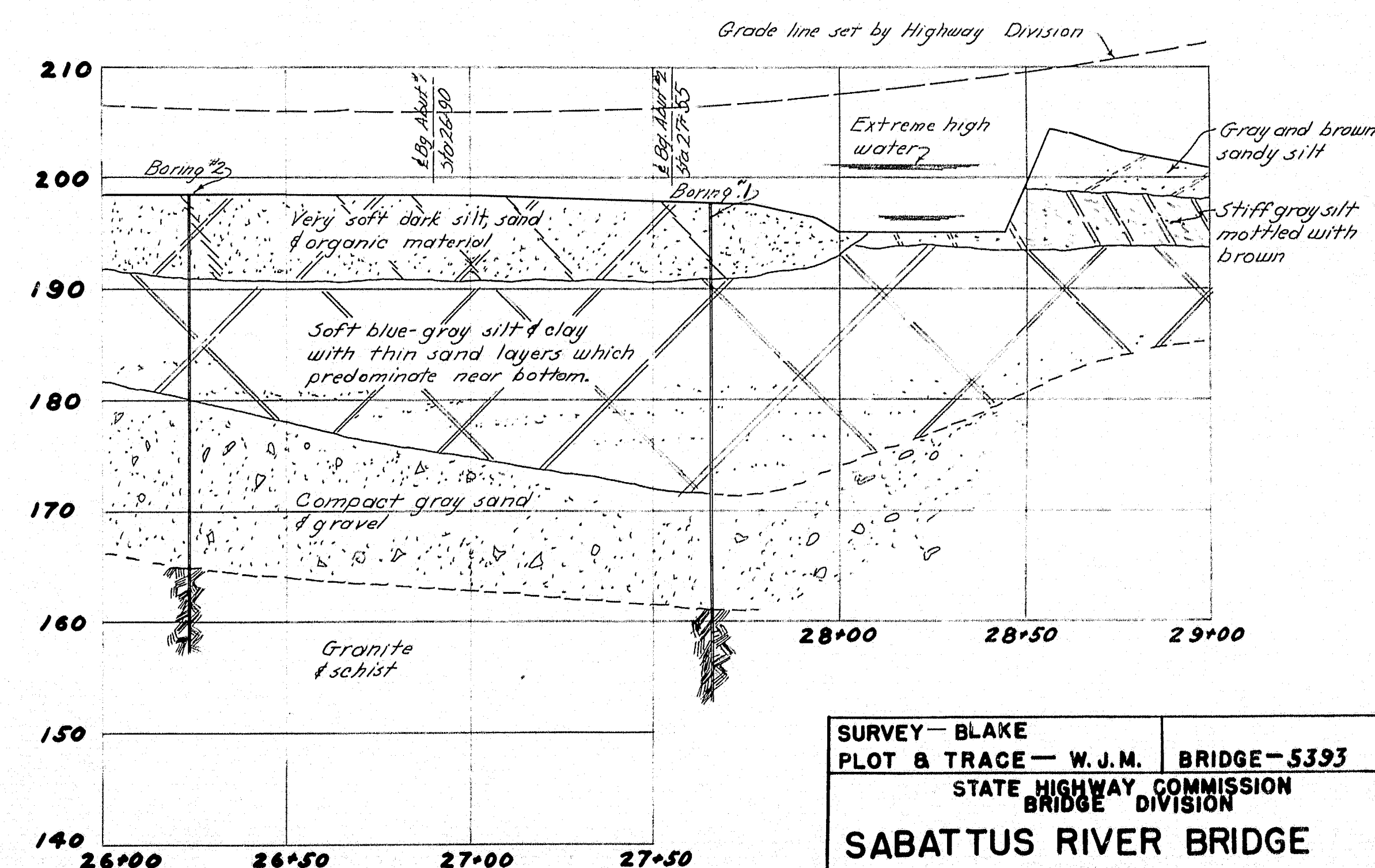
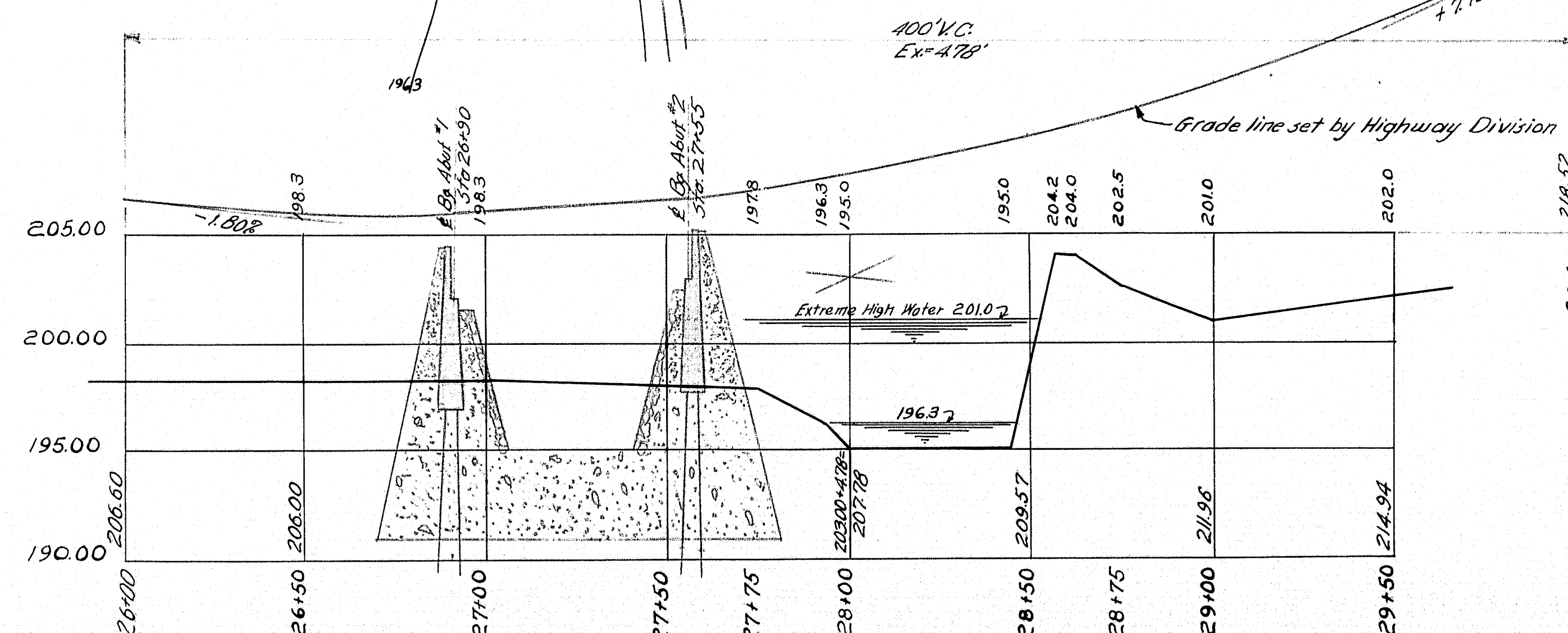


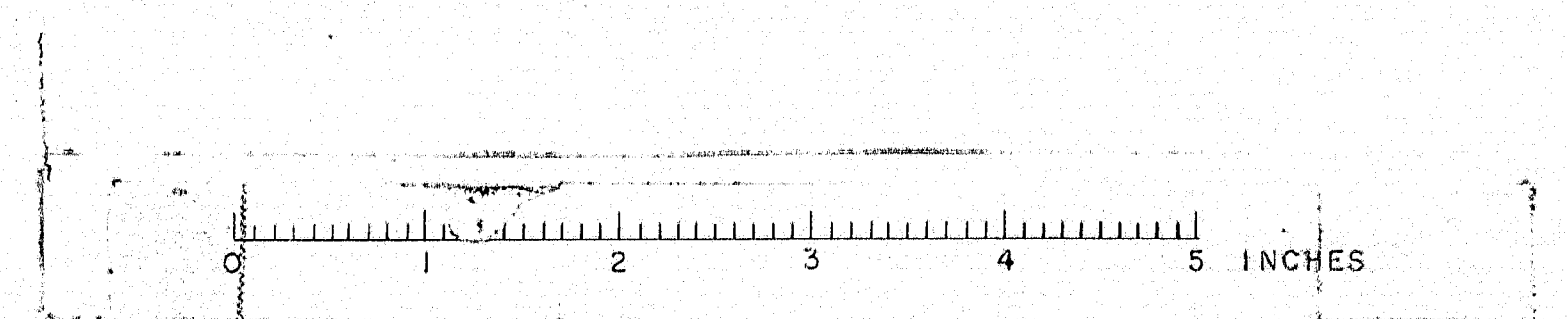
GENERAL NOTES

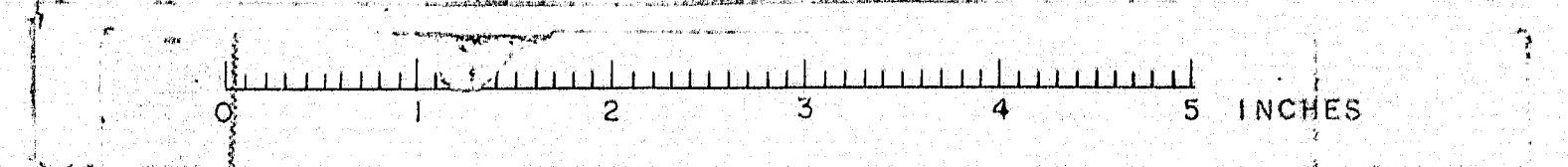
New location. Old bridge only a short distance from woolen mill.
 Stream—Very sluggish current at all stages. Water polluted with dye waste from mill. Extreme high water not over Elev. 201.00. Present stage, low water.
 Foundation—Surroundings on West approach, marsh and flat intervals.
 Soundings—No. 1 at station 27+97 on E. Rod penetrated very easily 29.0' below water to refusal at Elev. 167.30 Thru soft blue clay.
 Bench marks were established from highway survey bench mark.



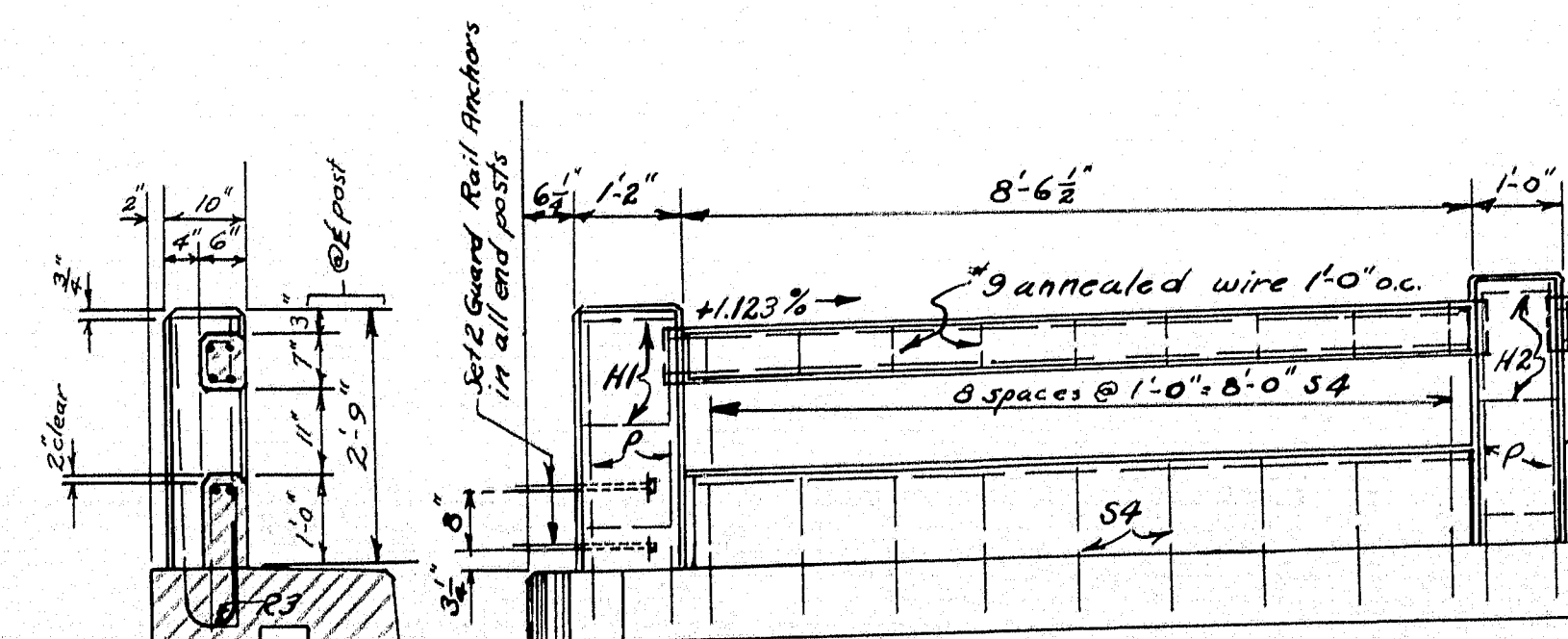
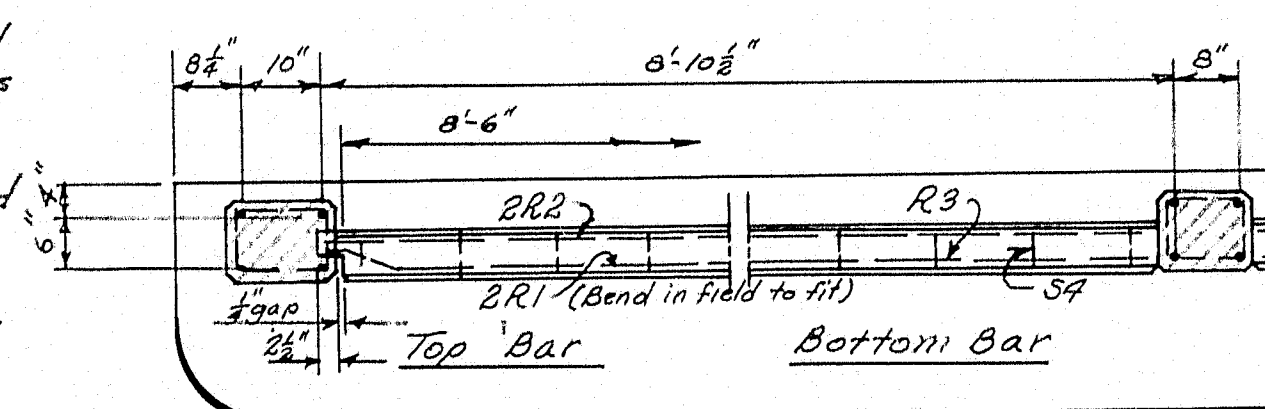
SURVEY—BLAKE
 PLOT & TRACE—W.J.M.
 STATE HIGHWAY COMMISSION
 BRIDGE DIVISION
SABATTUS RIVER BRIDGE
 OVER
SABATTUS RIVER
 IN THE TOWN OF
WEBSTER
ANDROSCOGGIN COUNTY
 SURVEY
 SHEET / OF 4 AUGUSTA, MAINE JAN. 1950

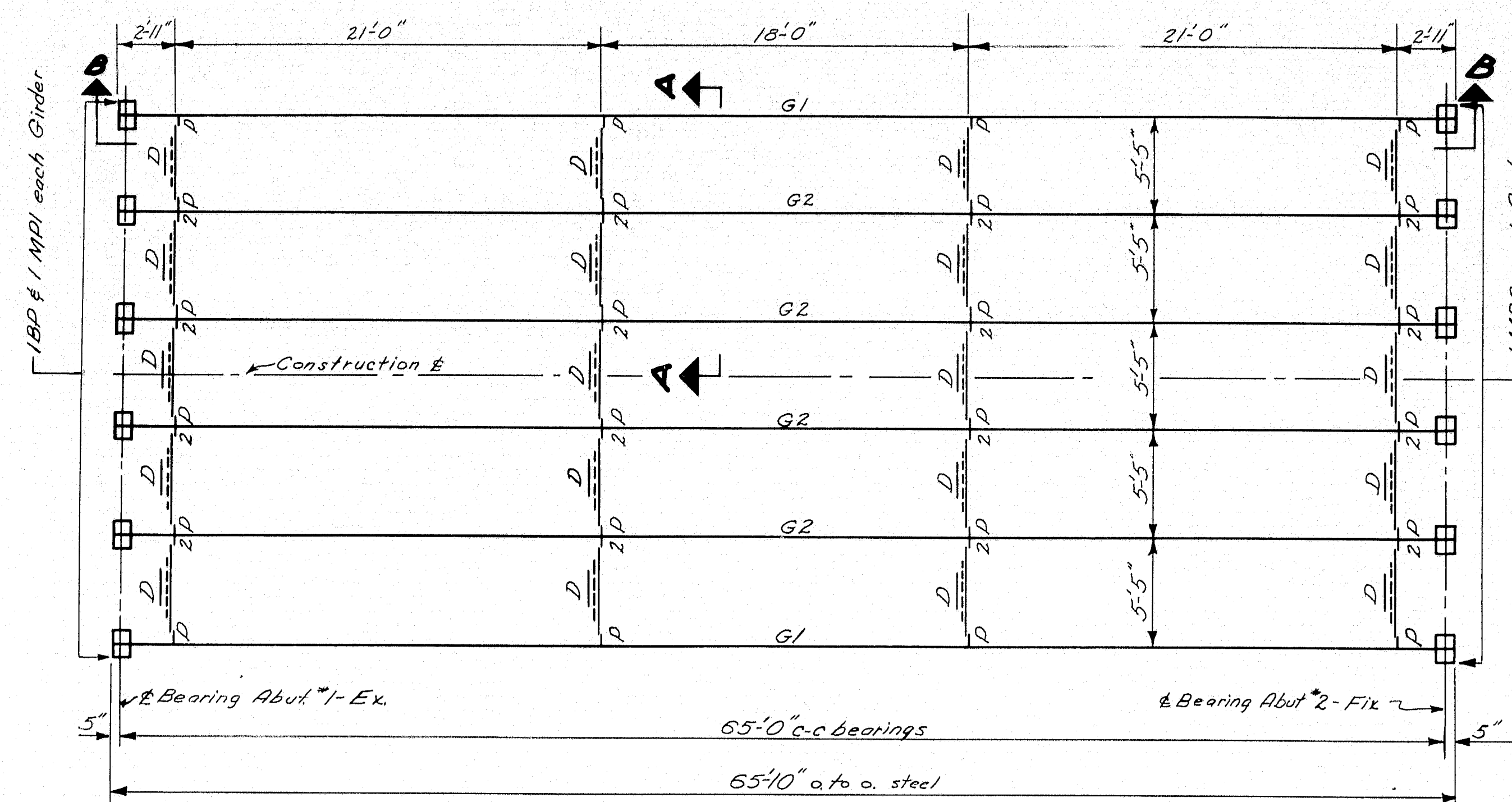
M. 303



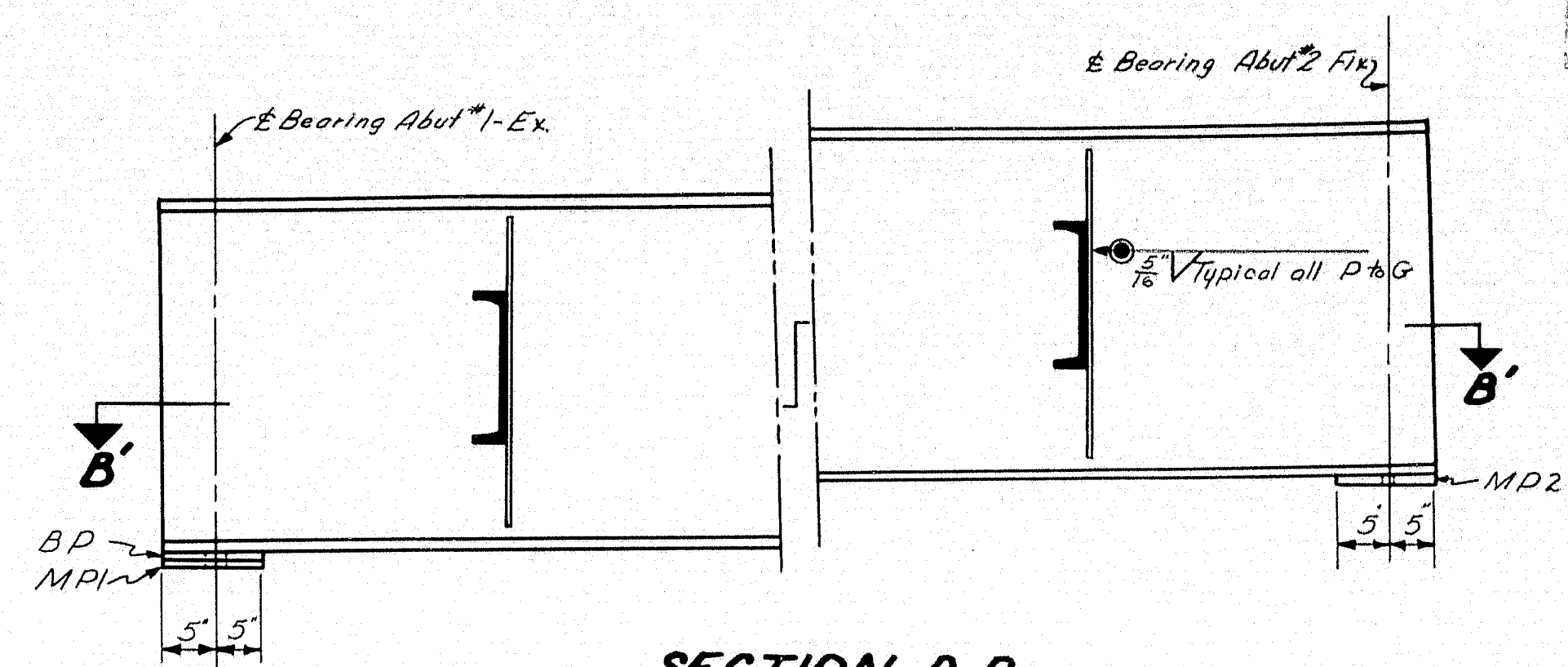


M. 30.5

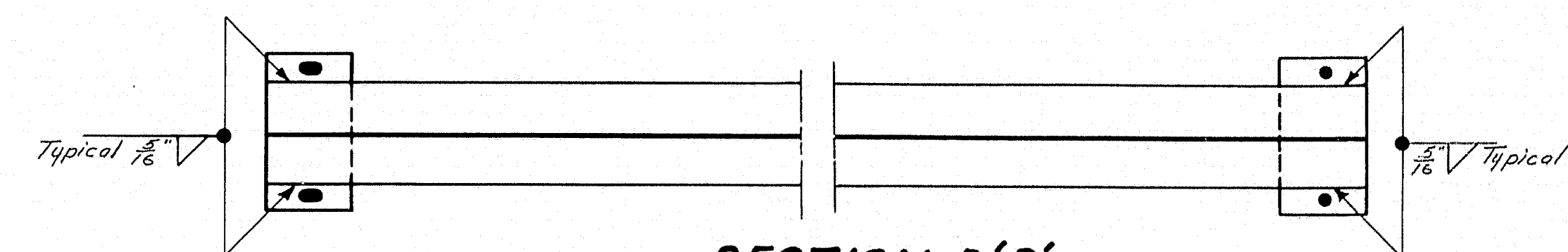




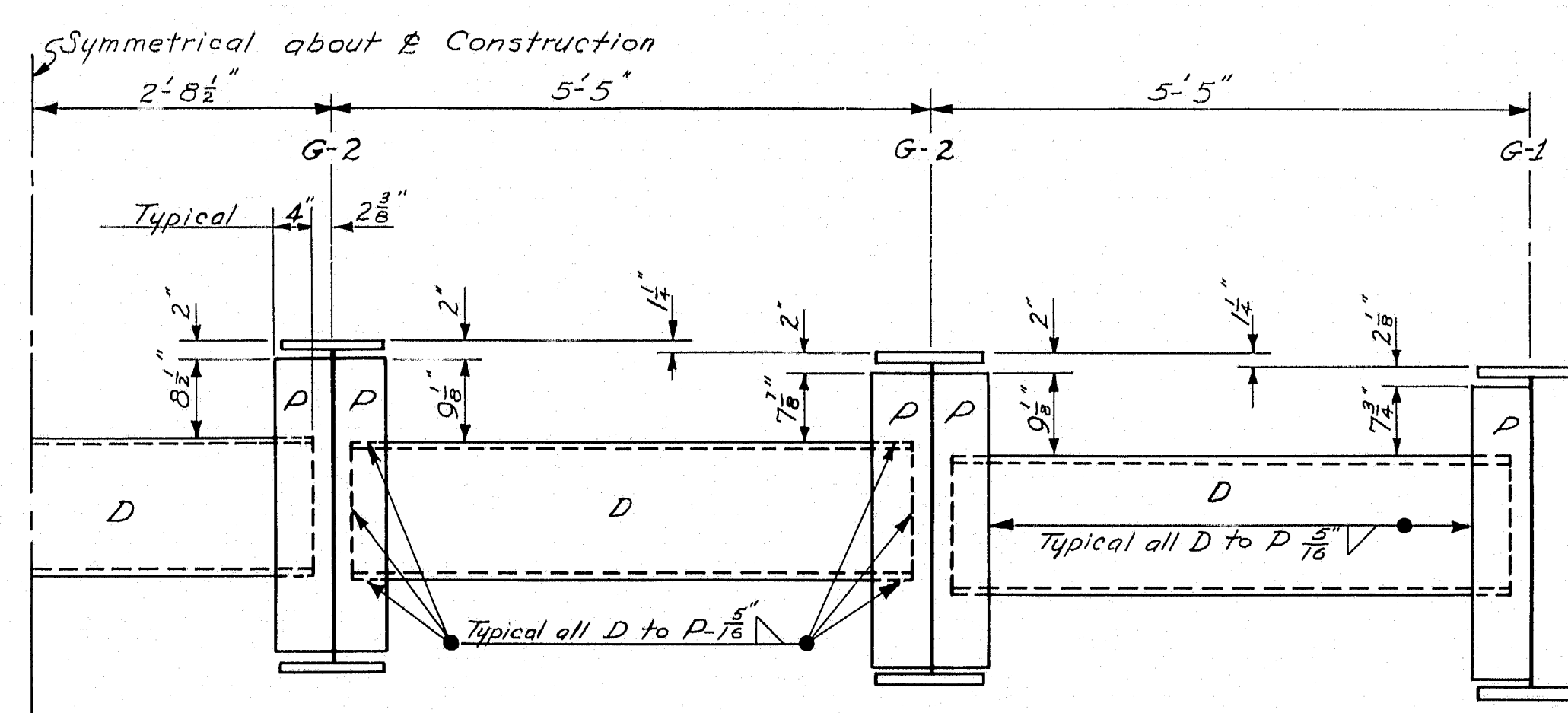
ERECTION DIAGRAM



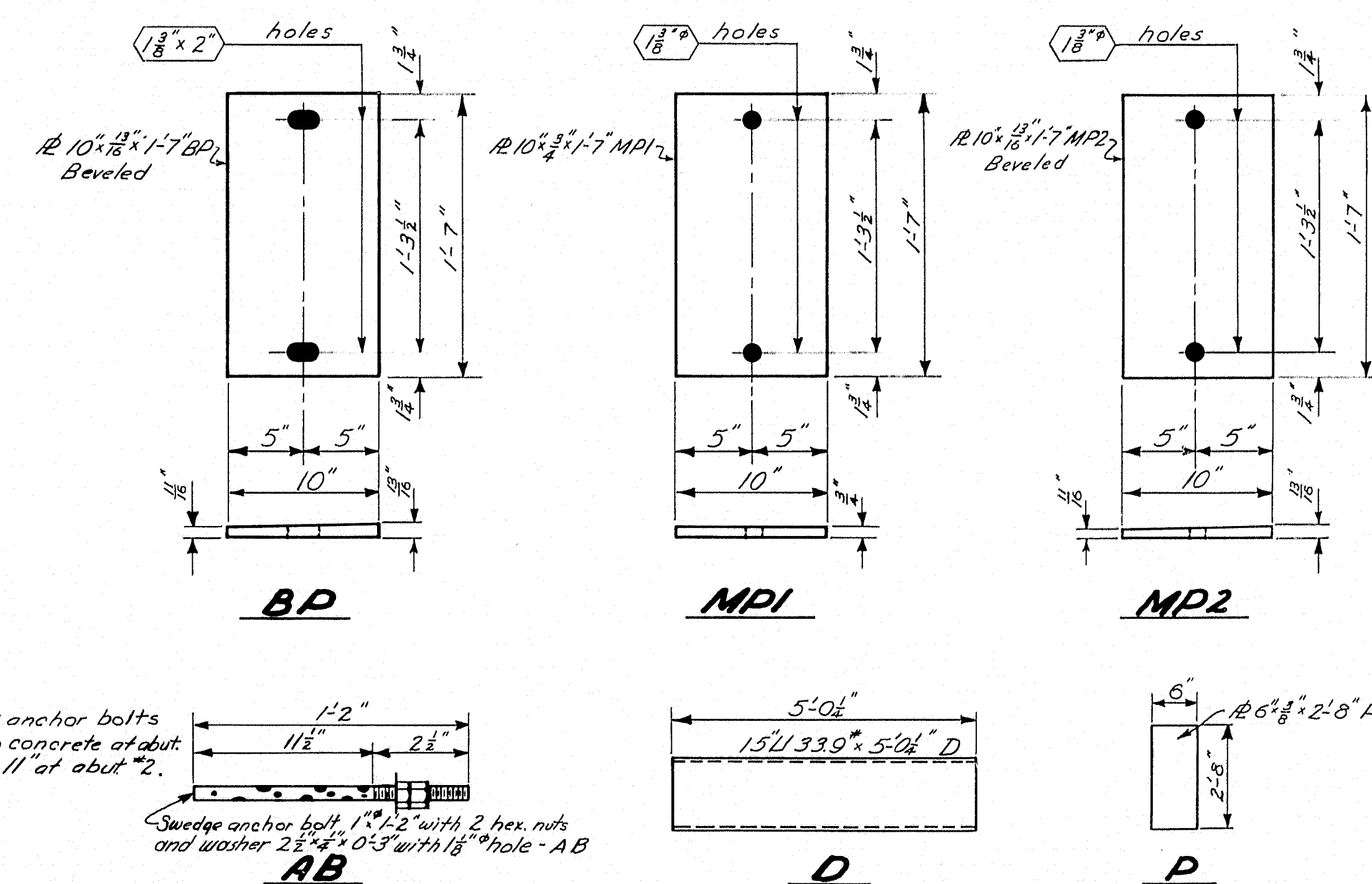
SECTION B-B



SECTION B-B'



SECTION A-A



NOTE: Set anchor bolts 10" into concrete at abut 1 and 11" at abut 2.
Sledge anchor bolt, 1" x 1'-2" with 2 hex nuts and washer 2 1/2" x 1'-0" with 1/8" hole - AB

Mark	Piece	No. Req'd.
G1	Girder	2
G2	Girder	4
D	Diaphragm	20
D	Plate (Diaphragm to Girder)	40
BP	Bearing Plate	6
MPI	Masonry Plate	6
MP2	Masonry Plate	6
AB	Anchor Bolt	24

SPECIFICATIONS

State of Maine, State Highway Commission,
Bridge Division, Specifications, Steel Highway
Bridges, November, 1945.
Loading - H 20-44

DESIGN - RISSEL TRACE - MAZEIKO CHECK - A.B.R.	BRIDGE - 5393
STATE HIGHWAY COMMISSION BRIDGE DIVISION	
SABATTUS RIVER BRIDGE OVER SABATTUS RIVER IN THE TOWN OF WEBSTER ANDROSCOGGIN COUNTY	
STEEL DETAILS AUGUSTA, MAINE JULY 1950	

SHEET 4 OF 4

M 306

